



ASI-T-276R48A5SRN/A

Item	Specification	Unit
Display Type	TFT / Transmissive / Normally black	/
Size	2.76	Inch
Viewing Direction	Full viewing angle	O'clock
Gray Scale Inversion Direction	-	O'clock
Outline Dimension (W × H × D)	73.03 × 76.48 × 2.24	mm ³
Active Area (W × H)	Ø70.13	mm ²
Pixel Pitch	0.1461 × 0.1461	mm ²
Number of Dots	480 (RGB) × 480	/
Driver IC	ST7701S	/
Backlight Type	White LED	/
Interface Type	3-wire SPI + 16-/18-/24-bit RGB	/
Color Depth	16.7M	/
Pixel Configuration	R.G.B Vertical Stripe	/
Top Polarizer Surface Treatment	Anti-glare	/
Input Voltage	3.3	V
With / Without TSP	Without TSP	/
TP Surface Treatment	-	/
Weight	21	g



■ REVISION RECORD

[illegible]

CONTENTS

- REVISION RECORD
- GENERAL INFORMATION
- EXTERNAL DIMENSIONS
- ABSOLUTE MAXIMUM RATINGS
- ELECTRICAL CHARACTERISTICS
- BACKLIGHT CHARACTERISTICS
- ELECTRO-OPTICAL CHARACTERISTICS
- INTERFACE DESCRIPTION
- BLOCK DIAGRAM
- APPLICATION NOTES
- RELIABILITY TEST
- INSPECTION CRITERION
- PRECAUTIONS FOR USING LCD MODULES
- PRIOR CONSULT MATTER

■ GENERAL INFORMATION

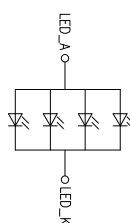
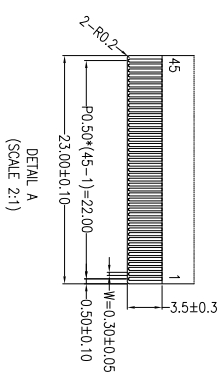
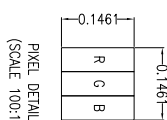
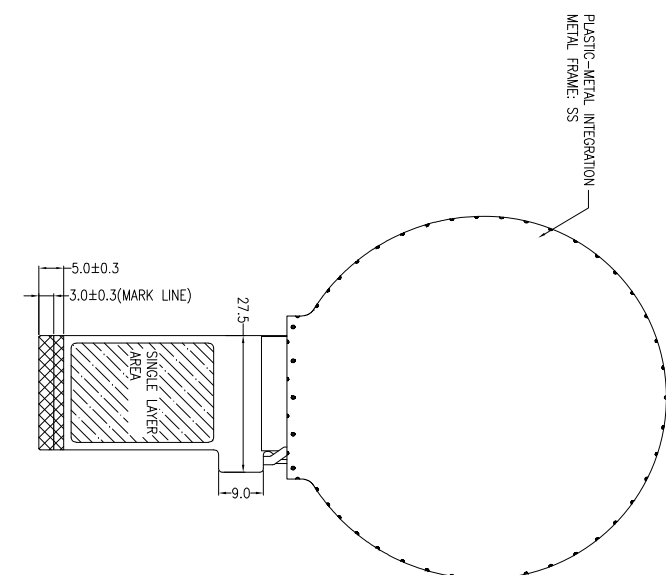
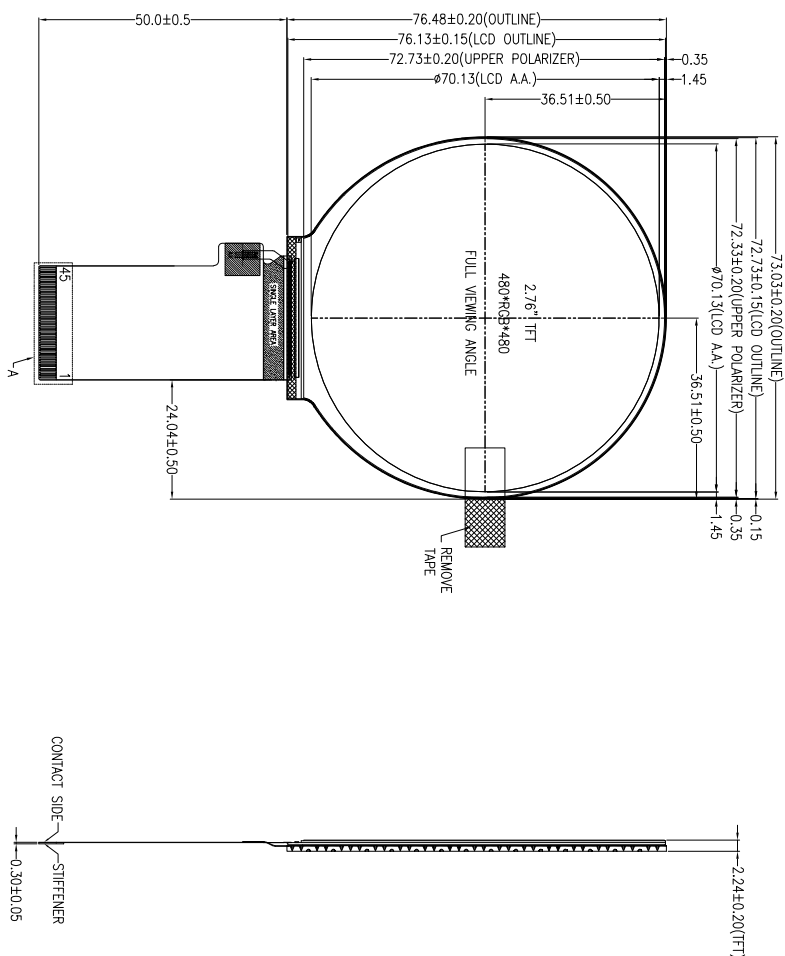
Item	Specification	Unit
Display Type	TFT / Transmissive / Normally black	/
Size	2.76	Inch
Viewing Direction	Full viewing angle	O'clock
Gray Scale Inversion Direction	-	O'clock
Outline Dimension (W × H × D)	73.03 × 76.48 × 2.24	mm ³
Active Area (W × H)	Ø70.13	mm ²
Pixel Pitch	0.1461 × 0.1461	mm ²
Number of Dots	480 (RGB) × 480	/
Driver IC	ST7701S	/
Backlight Type	White LED	/
Interface Type	3-wire SPI + 16-/18-/24-bit RGB	/
Color Depth	16.7M	/
Pixel Configuration	R.G.B Vertical Stripe	/
Top Polarizer Surface Treatment	Anti-glare	/
Input Voltage	3.3	V
With / Without TSP	Without TSP	/
TP Surface Treatment	-	/
Weight	21	g

Note 1: ROHS compliant;




Note 2: LCM weight tolerance: ±5%.

■ EXTERNAL DIMENSIONS

- NOTES FOR ITI:
1. DISPLAY TYPE: TFT, TRANSMISSIVE, NORMALLY BLACK
2. OPERATING VOLTAGE: VO=3.3V (TYP.), IDDC=1.65V~3.3V (TYP.)
3. VIEWING DIRECTION: FULL VIEWING ANGLE
4. DRIVER IC: S7701S
5. OPERATING TEMP: -20°C ~ 70°C
6. STORAGE TEMP: -30°C ~ 80°C
7. BACKLIGHT TYPE: WHITE LED, IF=80mA, VF=5.4V~6.6V
8. SURFACE LUMINANCE: 500 CD/M² (TYP.)
9. TOP POLARIZER SURFACE TREATMENT: ANTI-GLARE
10. RECOMMEND MATCHING CONNECTOR: HRS F128-45S-0.5SH OR EQUIVALENT
11. ONLY THE SINGLE LAYER AREA ON FCC IS BENDABLE AND THE MINIMUM BEND RADIUS IS :1.5MM
12. UNMARKED TOLERANCE: ±0.2MM
13. ROHS COMPLIANT



PIN ASSIGNMENT FOR LCM	
PIN	SYMBOL
1	NC(XR)
2	NC(YU)
3	NC(XL)
4	NC(YU)
5	GND
6	GND
7	VCC
8	IOVCC
9	SIO
10	SDI
11	SCL
12	CS
13	RESET
14	DB23(J7)
15	DB22(J6)
16	DB20(J4)
17	DB20(J5)
18	DB19(J3)
19	DB18(J2)
20	DB17(J1)
21	DB16(J0)
22	DB15(J6)
23	DB14(J5)
24	DB13(J5)
25	DB12(J4)
26	DB11(J3)
27	DB10(J2)
28	DB9(J1)
29	DB8(J0)
30	DB7(J7)
31	DB6(J6)
32	DB5(J5)
33	DB4(J4)
34	DB3(J3)
35	DB2(J2)
36	DB1(J1)
37	DB0(J0)
38	DE
39	PE
40	HSYNC
41	VSNC
42	NC
43	LED_K
44	NC
45	LED_A

 HAKKARİ ÇELİK SANAYİ VE TİCARET A.Ş.					
DRAWN BY:		RITA		MODULE P/N:	
CHECKED BY:				 	
APPROVED BY:				ASİT-276R48A5SRN/A	
REVISER		DATE		DESCRIPTION:	
01 FIRST ISSUE		2024.03.13		TFT MODULE	
VER. REVISED DESCRIPTION		VERSION NO.: 01		SHEET NO: 1/1	

■ ABSOLUTE MAXIMUM RATINGS

Parameter	Symbol	Min.	Max.	Unit
Supply Voltage for Analog	VCI	-0.3	4.6	V
Supply Voltage for Logic	IOVCC	-0.3	4.6	V
Supply Current (One LED)	I _{LED}	-	30	mA
Operating Temperature	T _{OP}	-20	70	°C
Storage Temperature	T _{ST}	-30	80	°C

Note: If the absolute maximum rating of even is one of the above parameters is exceeded even momentarily, the quality of the product may be degraded. Absolute maximum ratings, therefore, specify the values exceeding which the product may be physically damaged. Be sure to use the product within the range of the absolute maximum ratings.

■ ELECTRICAL CHARACTERISTICS

Parameter	Symbol	Min.	Typ.	Max.	Unit	Notes
Supply Voltage for Analog	VCI	2.5	3.3	3.6	V	
Supply Voltage for Logic	IOVCC	1.65	1.8	3.3	V	
Normal Mode Current	IDD	-	16	32	mA	
Input High-Level Voltage	VIH	0.7IOVCC	-	IOVCC	V	
Input Low-Level Voltage	VIL	GND	-	0.3IOVCC	V	
Output High-Level Voltage	VOH	0.8IOVCC	-	IOVCC	V	
Output Low-Level Voltage	VOL	GND	-	0.2IOVCC	V	

■ BACKLIGHT CHARACTERISTICS

Parameter	Symbol	Min.	Typ.	Max.	Unit	Notes
Forward Voltage	V _f	5.4	6.0	6.6	V	Ta=25±2°C, 60%RH±5%
Forward Current	I _f	-	80	-	mA	
Power Consumption	W _{BL}	-	480	-	mW	
Operating Life Time	-	50000	-	-	Hrs.	

Note: Operating life time means brightness goes down to 50% initial brightness;
The life time of LED will be reduced if LED is driven by high current, high ambient temperature and humidity conditions.

■ ELECTRO-OPTICAL CHARACTERISTICS

Ta=25°C±2°C. VCI=3.3V, If=80mA.

Parameter		Symbol	Condition	Min.	Typ.	Max.	Unit	Remark	Notes
Response Time		Tr + Tf	θ=0°	-	35	40	ms	FIG 1, 2	4
Contrast Ratio		Cr		700	1000	-	---	FIG 1, 3	1
Luminance Uniformity		δ White		80	-	-	%	FIG 1, 3	3
Surface Luminance		Lv		400	500	-	cd/m²	FIG 1, 3	2
Viewing Angle Range		θ	∅ = 90°	80	-	-	deg	FIG 1, 4	1, 6
			∅ = 270°	80	-	-	deg		
			∅ = 0°	80	-	-	deg		
			∅ = 180°	80	-	-	deg		
CIE (x,y) Chromaticity	Red	x	θ=0°	0.562	0.612	0.662	---	FIG 1, 3	5
		y		0.281	0.331	0.381			
	Green	x		0.256	0.306	0.356			
		y		0.501	0.551	0.601			
	Blue	x		0.099	0.149	0.199			
		y		0.005	0.055	0.105			
	White	x		0.227	0.277	0.327			
		y		0.228	0.278	0.328			
NTSC		-	-	-	59	-	%	-	-

Note 1. Contrast Ratio (CR) is defined by following formula. For more information see FIG 3.

$$\text{Contrast Ratio} = \frac{\text{Average Surface Luminance with all white pixels (P1, P2, P3, P4, P5)}}{\text{Average Surface Luminance with all black pixels (P1, P2, P3, P4, P5)}}$$

Note 2. Surface luminance is the LCD surface luminance with all pixels displaying white state. For more information see FIG 3.

$$L_v = \text{Average Surface Luminance with all white pixels (P1, P2, P3, P4, P5)}$$

Note 3. The uniformity in surface luminance (δ White) is determined by measuring luminance at each test position 1 through 5, and then dividing the maximum luminance of 5 points luminance by minimum luminance of 5 points luminance. For more information see FIG 3.

$$\delta \text{ White} = \frac{\text{Minimum Surface Luminance with all white pixels (P1, P2, P3, P4, P5)}}{\text{Maximum Surface Luminance with all white pixels (P1, P2, P3, P4, P5)}}$$

Note 4. Response time is the time required for the display to transition from white to black (Rise Time, Tr) and from black to white (Fall Time, Tf). For additional information see FIG 2.

Note 5. CIE (x,y) chromaticity, color coordinates measured at center point of LCD.

Note 6. Viewing angle is the angle at which the contrast ratio is greater than a specific value. For TFT module, the specific value of contrast ratio is 10. For monochrome module, the specific value of contrast ratio is 2. The angles are determined for the horizontal or x axis and the vertical or y axis with respect to the z axis which is normal to the LCD surface. For more information see FIG 4.

FIG 1. The setup of optical measurement.

The optical characteristics should be measured in a stable, windless, and dark room.

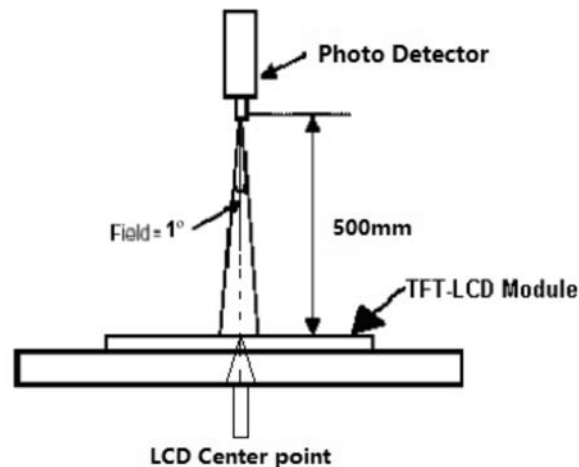


FIG 2. The Definition of Response Time

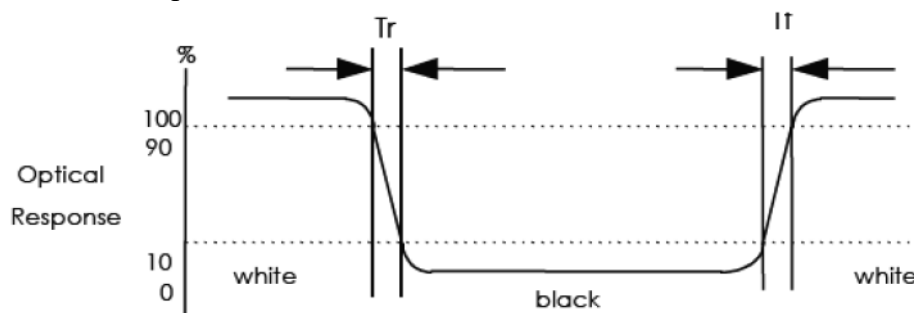
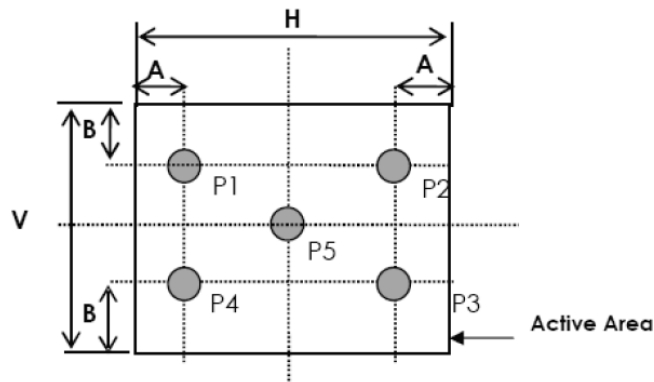


FIG 3. Measuring method for contrast ratio, surface luminance, Luminance uniformity, CIE (x,y) chromaticity.



A: $H/6$

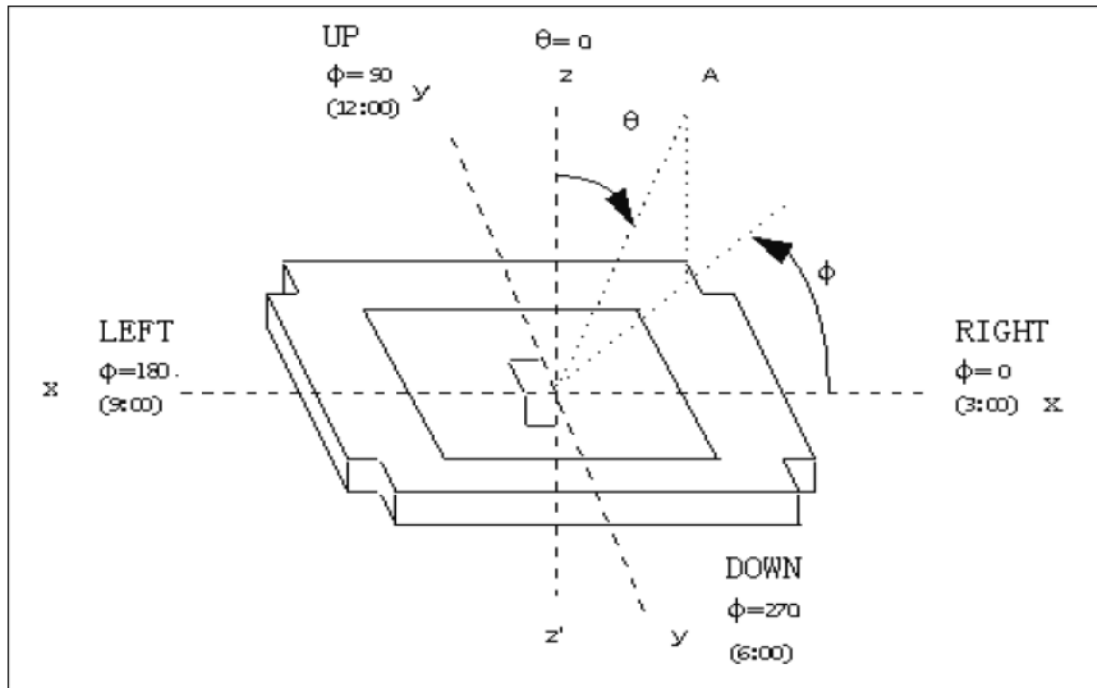
B: $V/6$

H, V: Active Area

Light spot size $\varnothing = 7\text{mm}$, 500mm distance from the LCD surface to detector lens.

Measurement instrument is TOPCON's luminance meter BM-7.

FIG 4. The definition of viewing angle



■ INTERFACE DESCRIPTION

Pin No.	Symbol	I/O/P	Description
1	NC(XR)	-	No connection.
2	NC(YD)	-	No connection.
3	NC(XL)	-	No connection.
4	NC(YU)	-	No connection.
5	GND	P	Ground.
6	GND	P	Ground.
7	VCI	P	Supply voltage.
8	IOVCC	P	Supply Voltage (Logic).
9	SDO	O	Serial data output pin used for the SPI Interface. Leave the pin open when not in use.
10	SDI	I/O	Serial data input/output bidirectional pin for SPI Interface.
11	SCL	I	Serial clock input for SPI interface.
12	CS	I	A chip select signal Low: the chip is selected and accessible High: the chip is not selected and not accessible
13	RESET	I	The external reset input Initializes the chip with a low input. Be sure to execute a power-on reset after supplying power.
14	DB23(R7)	I/O	Data bus.
15	DB22(R6)	I/O	Data bus.
16	DB21(R5)	I/O	Data bus.
17	DB20(R4)	I/O	Data bus.
18	DB19(R3)	I/O	Data bus.
19	DB18(R2)	I/O	Data bus.
20	DB17(R1)	I/O	Data bus.
21	DB16(R0)	I/O	Data bus.
22	DB15(G7)	I/O	Data bus.
23	DB14(G6)	I/O	Data bus.
24	DB13(G5)	I/O	Data bus.
25	DB12(G4)	I/O	Data bus.
26	DB11(G3)	I/O	Data bus.
27	DB10(G2)	I/O	Data bus.
28	DB9(G1)	I/O	Data bus.
29	DB8(G0)	I/O	Data bus.
30	DB7(B7)	I/O	Data bus.
31	DB6(B6)	I/O	Data bus.
32	DB5(B5)	I/O	Data bus.
33	DB4(B4)	I/O	Data bus.
34	DB3(B3)	I/O	Data bus.
35	DB2(B2)	I/O	Data bus.

36	DB1(B1)	I/O	Data bus.
37	DB0(B0)	I/O	Data bus.
38	DE	I	Data enable signal for RGB interface operation Low: access enabled High: access inhibited Fix to IOVCC or GND level when not in use.
39	PCLK	I	Dot clock signal for RGB interface operation.
40	HSYNC	I	Line synchronizing signal for RGB interface operation.
41	VSNC	I	Frame synchronizing signal for RGB interface operation.
42	NC	-	No connection.
43	LED_K	P	Cathode of LED backlight.
44	NC	-	No connection.
45	LED_A	P	Anode of LED backlight.

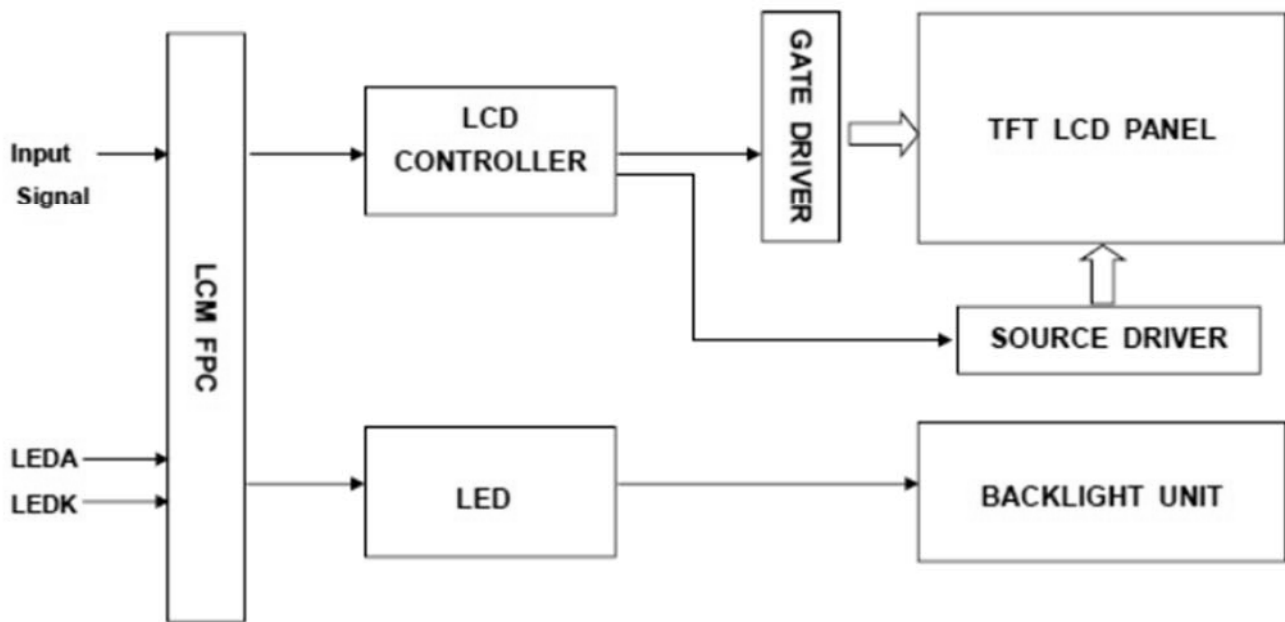
I/O/P definition: I---Input O---Output P---Power/Ground

Note: RGB interface DB used:

RGB INTERFACE	DB PIN IN USE
16-bit RGB interface	DB20~DB16, DB13~DB8, DB4~DB0
18-bit RGB interface	DB21~DB16, DB13~DB8, DB5~DB0
24-bit RGB interface	DB23~DB0

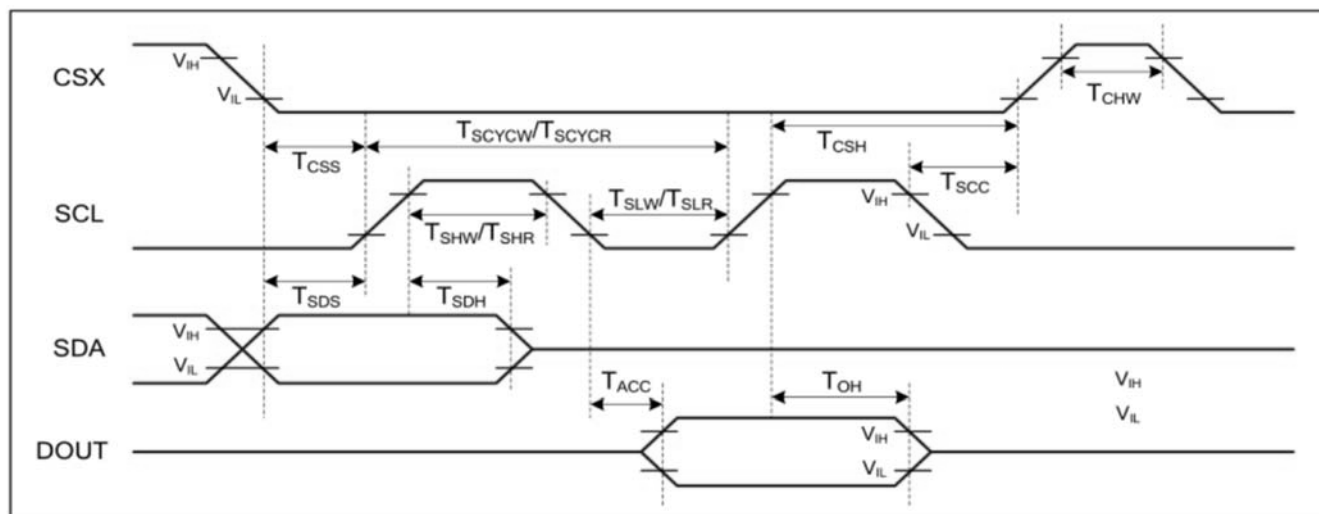
* If use RGB mode, must select serial interface.

■ BLOCK DIAGRAM



■ APPLICATION NOTES

1. Serial Interface Characteristics (3-wire serial):



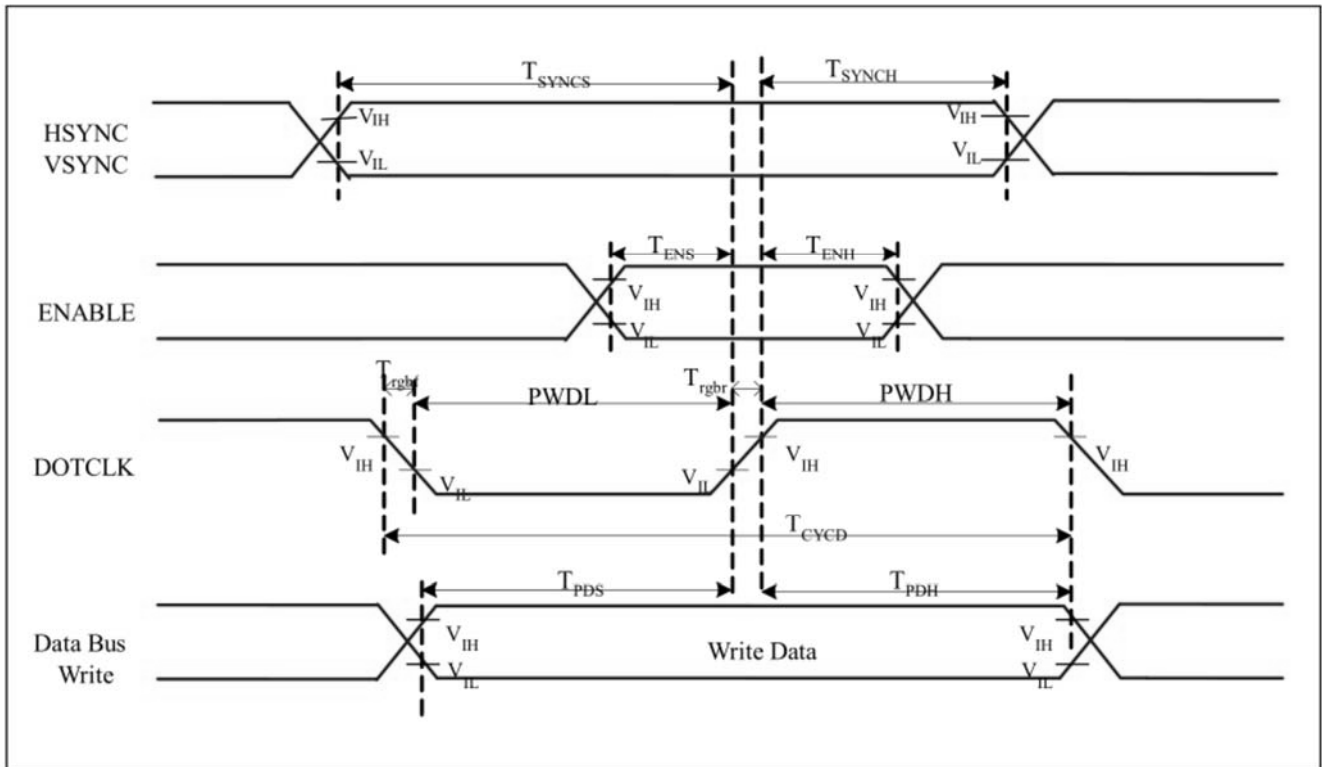
3-wire serial Interface Timing Characteristics

IOVCC=1.8V, VCI=3.3V, Ta=25°C

Signal	Symbol	Parameter	Min.	Max.	Unit	Description
CSX	T _{CSS}	Chip select setup time (write)	15	-	ns	
	T _{CSH}	Chip select hold time (write)	15	-	ns	
	T _{CSS}	Chip select setup time (read)	60	-	ns	
	T _{SCC}	Chip select hold time (write)	60	-	ns	
	T _{CHW}	Chip select "H" pulse width	40	-	ns	
SCL	T _{SCYCW}	Serial clock cycle (write)	66	-	ns	
	T _{SHW}	SCL "H" pulse width (write)	15	-	ns	
	T _{SLW}	SCL "L" pulse width (write)	15	-	ns	
	T _{SCYCR}	Serial clock cycle (read)	150	-	ns	
	T _{SHR}	SCL "H" pulse width (read)	60	-	ns	
	T _{SLR}	SCL "L" pulse width (read)	60	-	ns	
SDA (DIN)	T _{SDA}	Data setup time	10	-	ns	
	T _{SDH}	Data hold time	10	-	ns	

Note: The rising time and falling time (Tr, Tf) of input signal are specified at 15 ns or less. Logic high and low levels are specified as 30% and 70% of IOVCC for Input signals.

2. RGB Interface Characteristics

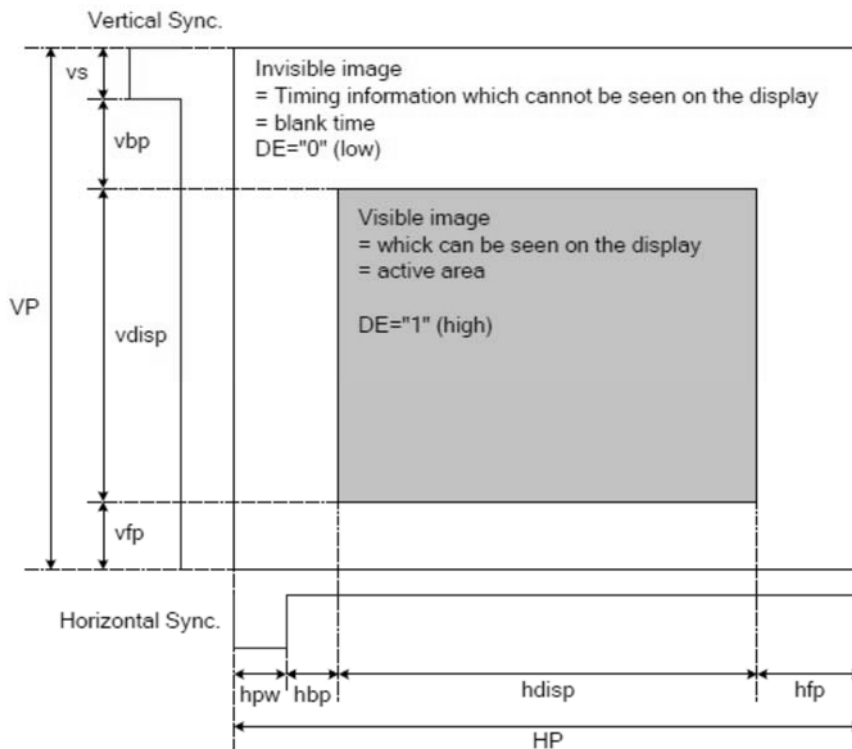


RGB Interface Timing Characteristics

Signal	Symbol	Parameter	Min.	Max.	Unit	Description
HSYNC VSYNC	T_{SYNCS}	VSYNC, HSYNC setup time	5	-	ns	
ENABLE	T_{ENS}	Enable setup time	5	-	ns	
	T_{ENH}	Enable hold time	5	-	ns	
DOTCLK	PWDH	DOTCLK high-level pulse width	15	-	ns	
	PWDL	DOTCLK low-level pulse width	15	-	ns	
	T_{CYCD}	DOTCLK cycle time	33	-	ns	
	Trghr, Trghf	DOTCLK rise/fall time	-	15	ns	
DB	T_{PDS}	PD data setup time	5	-	ns	
	T_{PDH}	PD data hold time	5	-	ns	

3. RGB Interface Definition

The display operation via the RGB interface is synchronized with the VSYNC, HSYNC, and DOTCLK signals. The data can be written only within the specified area with low power consumption by using window address function. The back porch and front porch are used to set the RGB interface timing.



DRAM Access Area by RGB Interface

Please refer to the following table for the setting limitation of RGB interface signals.

Parameter	Symbol	Min.	Typ.	Max.	Unit
DCLK Frequency	FCLK	-	20	-	MHz
Horizontal Sync. Width	hps	1	10	255	Clock
Horizontal Sync. Back Porch	hbp	1	54	255	Clock
Horizontal Sync. Front Porch	hfp	1	20	-	Clock
Vertical Sync. Width	vs	1	10	254	Line
Vertical Sync. Back Porch	vbp	1	60	254	Line
Vertical Sync. Front Porch	vfp	1	40	-	Line

Note: Typical value are related to the setting frame rate is 60Hz.

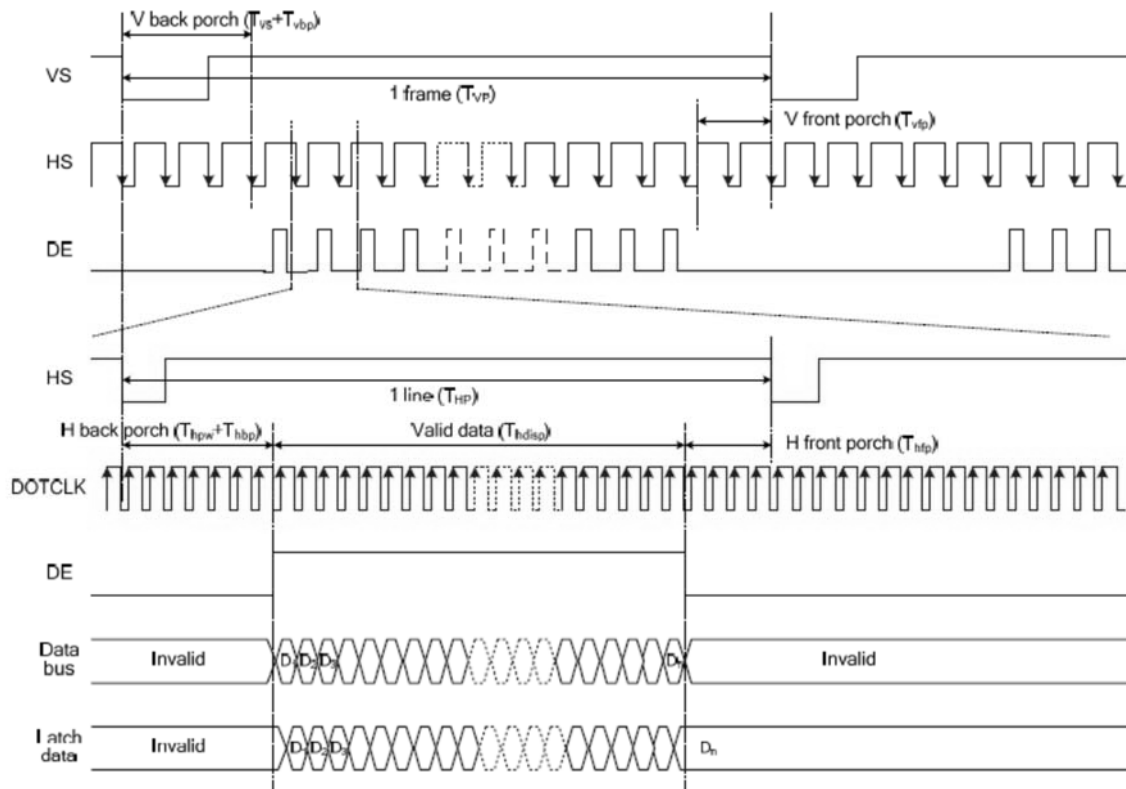
4. RGB Interface Mode Selection

ST7701 supports two kinds of RGB interface, DE mode and HV mode. The table shown below uses command C3h to select RGB interface mode.

DE/Sync	RGB Mode
0	DE mode
1	HV mode

5. RGB Interface Timing

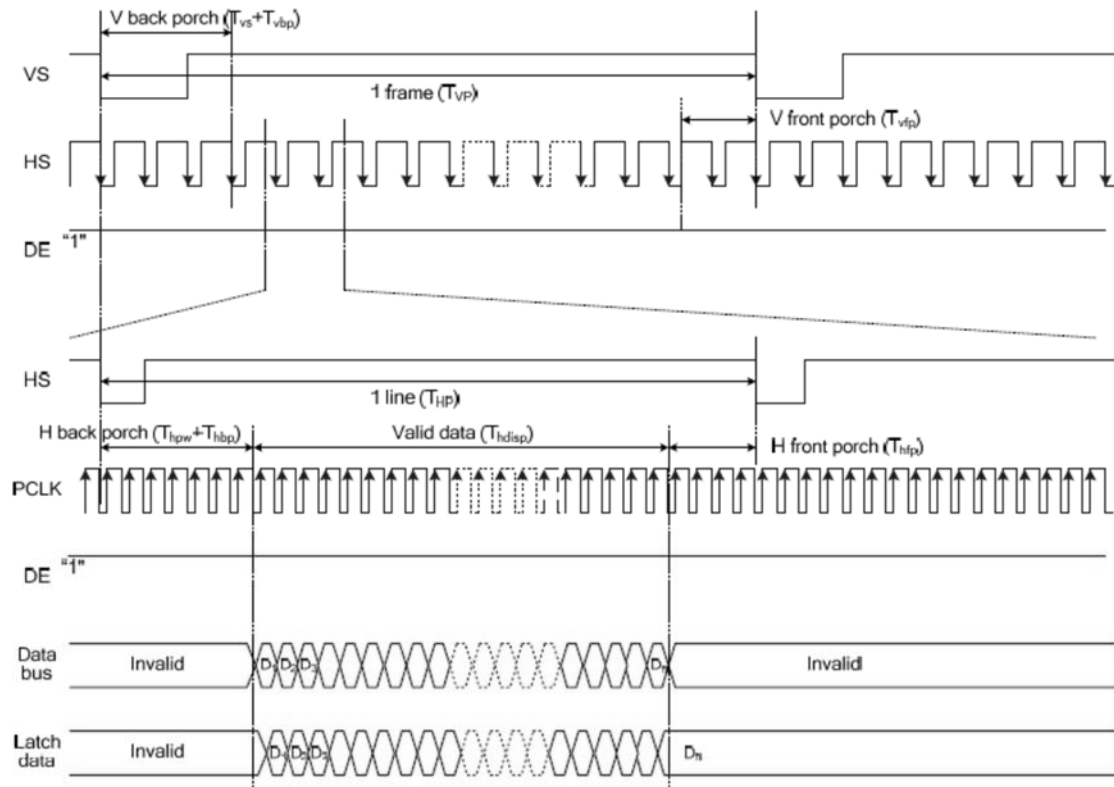
The timing chart of RGB interface DE mode is shown as follows.



Note: The setting of front porch and back porch in host must match that in IC as this mode.

Timing Chart of Signals in RGB Interface DE Mode

The timing chart of RGB interface HV mode is shown as follows.



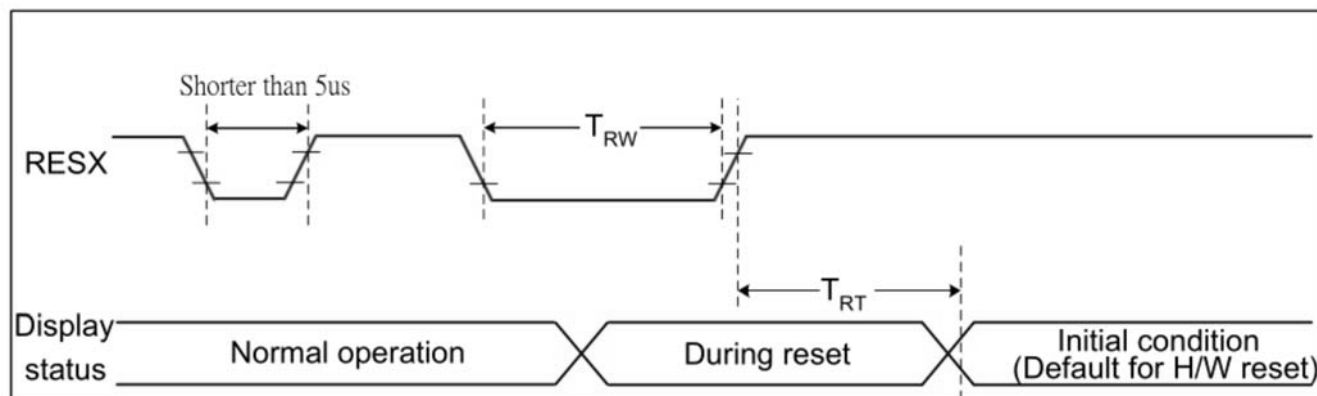
Timing chart of RGB interface HV mod

6. RGB Color Format

ST7701 supports two kinds of RGB interface, DE mode (mode 1) and HV mode (mode 2), and 16bit/18bit and 24-bit data format. When DE mode is selected and the VSYNC, HSYNC, DOTCLK, DE, D[17:0] pins can be used; when HV mode is selected and the VSYNC, HSYNC, DOTCLK, D[17:0] pins can be used. When using RGB interface, only serial interface can be selected.

Pad name	24 bits configuration VIPF[3:0]=0111	18 bits configuration VIPF[3:0]=0110		16 bits configuration VIPF[3:0]=0101
		MDT=0	MDT=1	
DB[23]	R7	Not used	Not used	Not used
DB[22]	R6	Not used	Not used	Not used
DB[21]	R5	R5	Not used	Not used
DB[20]	R4	R4	Not used	R4
DB[19]	R3	R3	Not used	R3
DB[18]	R2	R2	Not used	R2
DB[17]	R1	R1	R5	R1
DB[16]	R0	R0	R4	R0
DB[15]	G7	Not used	R3	Not used
DB[14]	G6	Not used	R2	Not used
DB[13]	G5	G5	R1	G5
DB[12]	G4	G4	R0	G4
DB[11]	G3	G3	G5	G3
DB[10]	G2	G2	G4	G2
DB[09]	G1	G1	G3	G1
DB[08]	G0	G0	G2	G0
DB[07]	B7	Not used	G1	Not used
DB[06]	B6	Not used	G0	Not used
DB[05]	B5	B5	B5	Not used
DB[04]	B4	B4	B4	B4
DB[03]	B3	B3	B3	B3
DB[02]	B2	B2	B2	B2
DB[01]	B1	B1	B1	B1
DB[00]	B0	B0	B0	B0

7. Reset Input Timing



Reset Timing

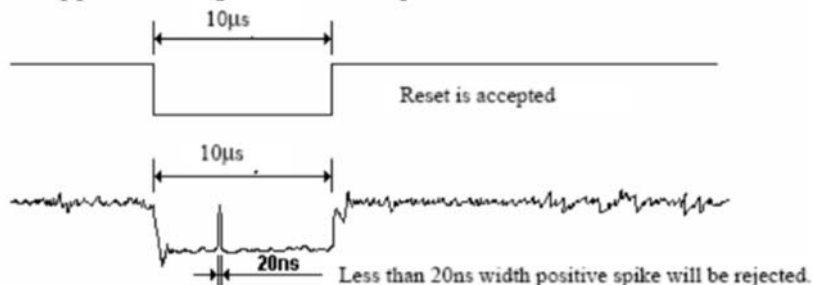
Related Pins	Symbol	Parameter	Min.	Max.	Unit
RESX	TRW	Reset pulse duration	10	-	us
	TRT	Reset cancel	-	5(Note 1, 5)	ms
			-	120(Note 1, 6, 7)	ms

Notes:

- The reset cancel includes also required time for loading ID bytes, VCOM setting and other settings from NVM (or similar device) to registers. This loading is done every time when there is HW reset cancel time (t_{RT}) within 5 ms after a rising edge of RESX.
- Spike due to an electrostatic discharge on RESX line does not cause irregular system reset according to the table below:

RESX Pulse	Action
Shorter than 5us	Reset Rejected
Longer than 9us	Reset
Between 5us and 9us	Reset starts

- During the resetting period, the display will be blanked (The display is entering blanking sequence, which maximum time is 120ms, when Reset Starts in Sleep Out-mode. The display remains the blank state in Sleep In-mode.) and then return to Default condition for Hardware Reset.
- Spike Rejection also applies during a valid reset pulse as shown below:



- When Reset applied during Sleep In Mode.
- When Reset applied during Sleep Out Mode.
- It is necessary to wait 5msec after releasing RESX before sending commands. Also Sleep Out command cannot be sent for 120msec.

■ RELIABILITY TEST

No.	Test Item	Test Condition	Remark
1	High Temperature Storage Test	80°C ± 2°C / 96Hrs.	IEC60068-2-2 GB2423.2
2	Low Temperature Storage Test	-30°C ± 2°C / 96Hrs.	IEC60068-2-1 GB2423.1
3	High Temperature Operating Test	70°C ± 2°C / 96Hrs.	IEC60068-2-2 GB2423.2
4	Low Temperature Operating Test	-20°C ± 2°C / 96Hrs.	IEC60068-2-1 GB2423.1
5	High Temperature and High Humidity Operation Test	60 ± 5°C, 90%RH 96Hrs.	IEC60068-2-3 GB/T2423.3
6	Thermal Shock Test (Non-operating)	-10±2°C(30Min.)~25±2°C(5Min.)~60±2°C(30Min.) 20Cycles	IEC60068-2-14 GB2423.22
7	Vibration Test (Non-operating)	Frequency: 10~55Hz Amplitude: 1.5mm Sweep Time: 11Mins Test Period: 6 Cycles For Each Direction of X, Y, Z (Packing Condition)	IEC60068-2-6 GB2423.10
8	Electro Static Discharge Test	R: 330Ω, C:150pF, 5points/panel Air: ±8KV, 5times; Contact: ±6KV, 5times; (Environment: 15°C~35°C, 30%~60%, 86Kpa~106Kpa)	IEC61000-4-2 GB/T17626.2

Note 1: Without water condensation.

Note 2: The function test shall be conducted after 2 hours storage at the room temperature (25°C±2°C) and room humidity (65%±5%) after removed from the test chamber. In the standard conditions, there shall be no functional defects occurred.

■ INSPECTION CRITERION

OUTGOING QUALITY STANDARD	PAGE 1 OF 4
TITLE: FUNCTIONAL TEST & INSPECTION CRITERIA	

This specification is made to be used as the standard acceptance/rejection criteria for TFT module.

1. Sample Plan

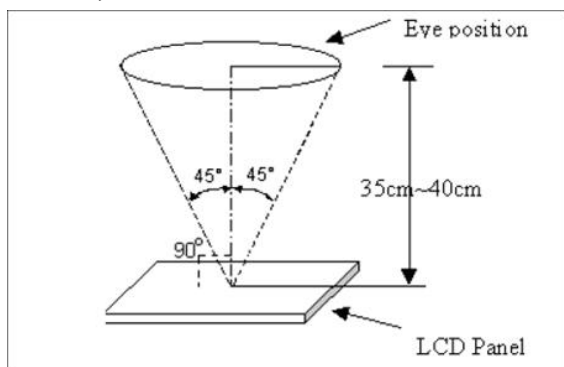
- 1.1 Lot size: Quantity per shipment lot per model
- 1.2 Sampling type: Normal inspection, Single sampling
- 1.3 Inspection level: II
- 1.4 Sampling table: MIL-STD-105D
- 1.5 Acceptable quality level (AQL)
 - Major defect: AQL=0.65
 - Minor defect: AQL=1.50

2. Inspection Condition

- 2.1 Ambient conditions
 - a. Temperature: Room temperature $25 \pm 5^\circ\text{C}$
 - b. Humidity: $(60 \pm 10) \% \text{RH}$
 - c. Illumination: Single fluorescent lamp non-directive (300 to 700 Lux)
- 2.2 Viewing distance

The distance between the LCD and the inspector's eyes shall be at least $35 \pm 5 \text{cm}$.
- 2.3 Viewing angle

U/D: $45^\circ / 45^\circ$, L/R: $45^\circ / 45^\circ$



3. Definition of Inspection Item

- 3.1 Definition of inspection zone in LCD module (LCM)

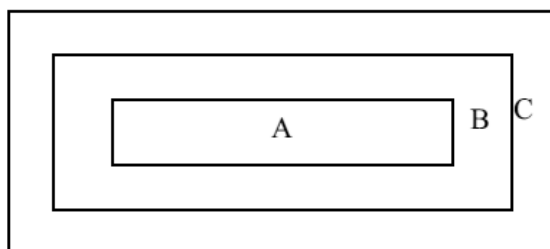


Fig.1 Inspection zones in an LCD

- Zone A: Character / Digit area (Active area)
- Zone B: Viewing area except Zone A (Zone A + Zone B=minimum viewing area)
- Zone C: Outside viewing area (invisible area after assembly in customer's product)

OUTGOING QUALITY STANDARD	PAGE 2 OF 4
---------------------------	-------------

TITLE: FUNCTIONAL TEST & INSPECTION CRITERIA

Note: As a general rule, visual defects in Zone C are permissible, when it is no trouble for quality and assembly of customer's product. If any visual defect in Zone C is impermissible, customers need to inform us by written.

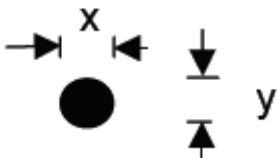
4. Inspection Plan

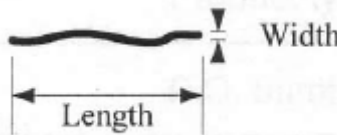

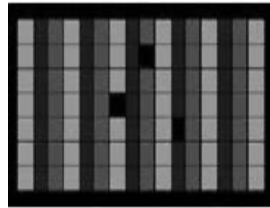
Defects are classified as major defects and minor defects according to the degree of defectiveness defined herein.

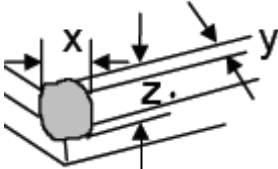
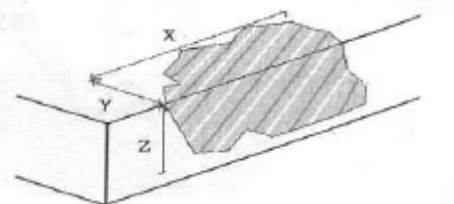
4.1 Major defect

Item No.	Items To Be Inspected	Inspection Standard
4.1.1	All Functional Defects	1) No display 2) Display abnormally 3) Short circuit 4) Line defect 5) Excess power consumption
4.1.2	Missing	Missing function component
4.1.3	Crack	Glass crack

4.2 Minor defect

Item No.	Items To Be Inspected	Inspection Standard	
4.2.1	Spot Defect Including Black spot White spot Pinhole Foreign particle Polarizer dirt	For dark / white spot is defined $\phi = (x + y) / 2$ 	
		Size ϕ (mm)	Acceptable Quantity
		$\phi \leq 0.15$ 2mm(min) apart	Ignore
		$0.15 < \phi \leq 0.25$ 5mm(min) apart	3
		$0.25 < \phi$	Not allowed

OUTGOING QUALITY STANDARD		PAGE 3 OF 4	
TITLE: FUNCTIONAL TEST & INSPECTION CRITERIA			
4.2.2	Line Defect Including Black line White line Scratch	Defined 	
		Width (mm) Length (mm)	Acceptable Quantity
		$W \leq 0.05$ and $L \leq 10$	Ignore
		$0.05 < W \leq 0.08$ and $L \leq 10$ 3mm(min) apart	3
		$0.08 < W \leq 0.10$ and $L \leq 5$ 3mm(min) apart	1
		$0.10 < W$ or $10 < L$	Not allowed
4.2.3	Polarizer Dent / Bubble	Size φ (mm)	Acceptable Quantity
		$\varphi \leq 0.25$	Ignore
		Non visible area	Ignore
		$0.25 < \varphi \leq 0.40$ 5mm(min) apart	2
		$0.40 < \varphi$	Not allowed
4.2.4	Electrical Dot Defect	Bright and black dot define:  and 	
		Inspection pattern: Full white, Full black, Red, Green and Blue screens	
		Item	Acceptable Quantity
		Black dot defect	2
		Bright dot defect	0
		Total Dot	2

OUTGOING QUALITY STANDARD		PAGE 4 OF 4
TITLE: FUNCTIONAL TEST & INSPECTION CRITERIA		
4.2.5	Touch Panel Chips	1. Corner chips: 
		Size (mm)
		Acceptable Quantity
		Ignore T: Glass thickness X: Length Y: Width Z: Thickness
		2. Side chips: 
		Size (mm)
		Acceptable Quantity
		Ignore T: Glass thickness X: Length Y: Width Z: Thickness
4.2.6	Touch Panel Newton Ring	Compare with limit sample

- Note: 1. Dot defect is defined as the defective area of the dot area is larger than 50% of the dot area.
 2. The distance between black dot defects or black and bright dot defects should be more than 5mm apart. The distance between two bright dot defects should be more than 15mm apart.
 3. Polarizer bubble is defined as the bubble appears on active display area. The defect of polarizer bubble shall be ignored if the polarizer bubble appears on the outside of active display area.
 4. Mura is checker by 6% ND filter.
 5. Foreign particle on the surface of the LCM should be ignore.

■ PRECAUTIONS FOR USING LCD MODULES

◆ Handling Precautions

1. The display panel is made of glass and polarizer. As glass is fragile. It tends to become or chipped during handling especially on the edges. Please avoid dropping or jarring. Do not subject it to a mechanical shock by dropping it or impact.
2. If the display panel is damaged and the liquid crystal substance leaks out, be sure not to get any in your mouth. If the substance contacts your skin or clothes, wash it off using soap and water.
3. Do not apply excessive force to the display surface or the adjoining areas since this may cause the color tone to vary. Do not touch the display with bare hands. This will stain the display area and degraded insulation between terminals (some cosmetics are determined to the polarizer).
4. The polarizer covering the display surface of the LCD module is soft and easily scratched. Handle this polarizer carefully. Do not touch, push or rub the exposed polarizers with anything harder than an HB pencil lead (glass, tweezers, etc.). Do not put or attach anything on the display area to avoid leaving marks on. Condensation on the surface and contact with terminals due to cold will damage, stain or dirty the polarizer. After products are tested at low temperature they must be warmed up in a container before coming is contacting with room temperature air.
5. If the display surface becomes contaminated, breathe on the surface and gently wipe it with a soft dry cloth. If it is heavily contaminated, moisten cloth with one of the following solvents.
 - Isopropyl alcohol
 - Ethyl alcohol

Do not scrub hard to avoid damaging the display surface.

6. Solvents other than those above-mentioned may damage the polarizer. Especially, do not use the following.
 - Water
 - Ketone
 - Aromatic solvents
7. Wipe off saliva or water drops immediately, contact with water over a long period of time may cause deformation or color fading. Avoid contacting oil and fats.
8. Exercise care to minimize corrosion of the electrode. Corrosion of the electrodes is accelerated by water droplets, moisture condensation or a current flow in a high-humidity environment.
9. Install the LCD Module by using the mounting holes. When mounting the LCD module make sure it is free of twisting, warping and distortion. In particular, do not forcibly pull or bend the I/O cable or the backlight cable.
10. Do not attempt to disassemble or process the LCD module.
11. If the logic circuit power is off, do not apply the input signals.
12. Electro-Static Discharge Control. Since this module uses a CMOS LSI, the same careful attention should be paid to electrostatic discharge as for an ordinary CMOS IC. To prevent destruction of the elements by static electricity, be careful to maintain an optimum work environment.
13. Electro-Static Discharge Control. Since this module uses a CMOS LSI, the same careful attention should be paid to electrostatic discharge as for an ordinary CMOS IC. To prevent destruction of the elements by static electricity, be careful to maintain an optimum work environment.
 - Before remove LCM from its packing case or incorporating it into a set, be sure the module and your body have the same electric potential. Be sure to ground the body when handling the LCD modules.
 - Tools required for assembling, such as soldering irons, must be properly grounded. make certain the AC power source for the soldering iron does not leak. When using an electric screwdriver to attach LCM, the screwdriver should be of ground potentiality to minimize as much as possible any transmission of electromagnetic waves produced sparks coming from the commutator of the motor.



- To reduce the amount of static electricity generated, do not conduct assembling and other work under dry conditions. To reduce the generation of static electricity be careful that the air in the work is not too dried. A relative humidity of 50%-60% is recommended. As far as possible make the electric potential of your work clothes and that of the work bench the ground potential

- The LCD module is coated with a film to protect the display surface. Exercise care when peeling off this protective film since static electricity may be generated.

- Since LCM has been assembled and adjusted with a high degree of precision, avoid applying excessive shocks to the module or making any alterations or modifications to it.

- Do not alter, modify or change the shape of the tab on the metal frame.

- Do not make extra holes on the printed circuit board, modify its shape or change the positions of components to be attached.

- Do not damage or modify the pattern writing on the printed circuit board.

- Absolutely do not modify the zebra rubber strip (conductive rubber) or heat seal connector.

- Except for soldering the interface, do not make any alterations or modifications with a soldering iron.

- Do not drop, bend or twist LCM.

◆ **Handling Precaution for LCM**

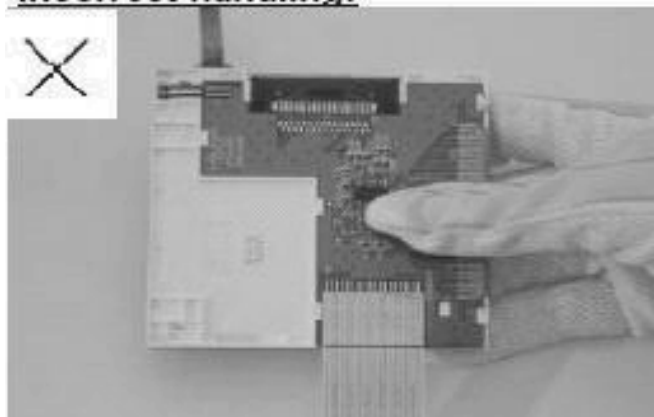
LCM is easy to be damaged.
Please note below and be careful for handling!

Correct handling:

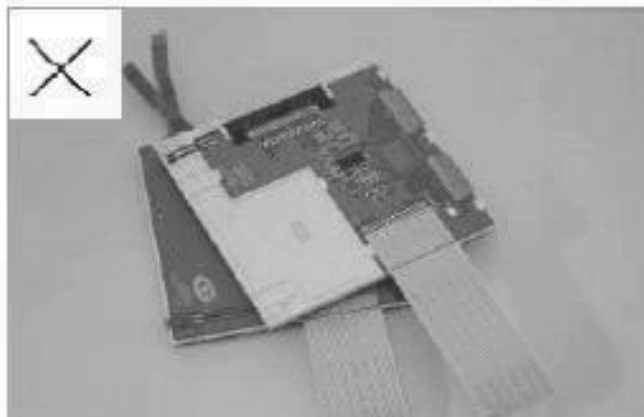


As above picture, please handle with anti-static gloves around LCM edges.

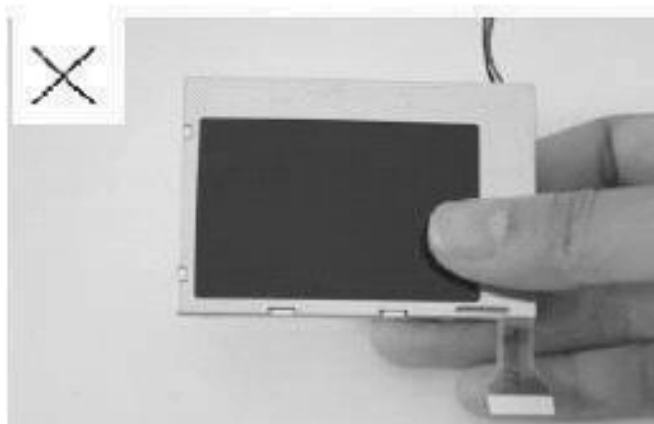
Incorrect handling:



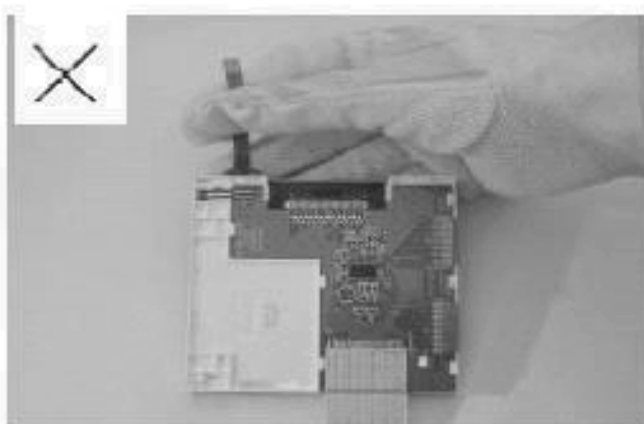
Please don't touch IC directly.



Please don't stack LCM.



Please don't hold the surface of panel.

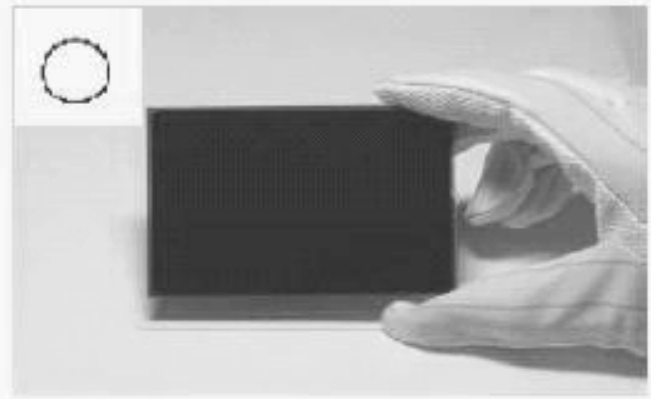


Please don't stretch interface of output, such as FPC cable.

◆ **Handling Precaution for LCD**

LCD is easy to be damaged.
Please note below and be careful for handling!

Correct handling:

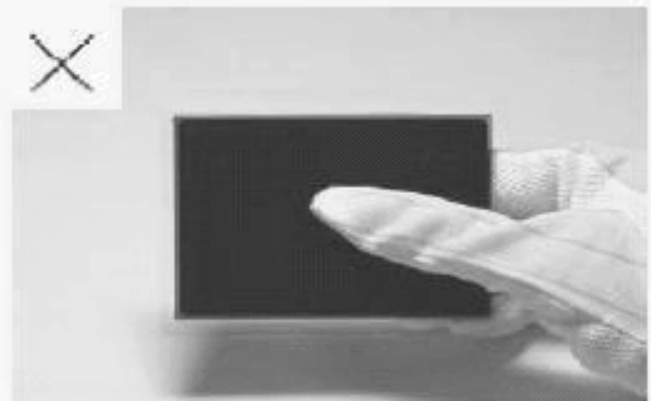


As above photo, please handle with anti-static gloves around LCD edges.

Incorrect handling:



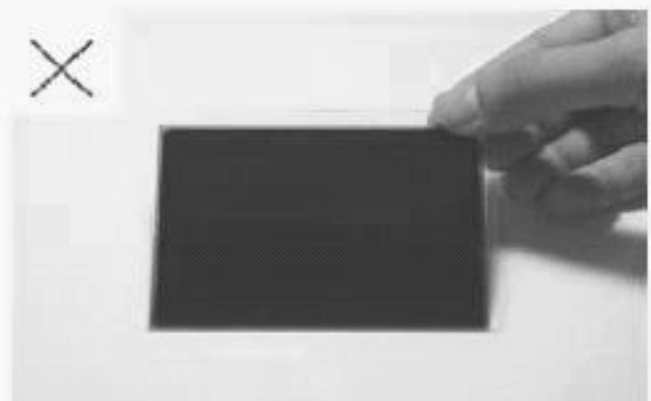
Please don't stack the LCDS.



Please don't hold the surface of LCD.



Please don't operate with sharp stick such as pens.



Please don't touch ITO glass without anti-static gloves.

◆ Storage Precautions

When storing the LCD modules, the following precaution is necessary.

1. Store them in a sealed polyethylene bag. If properly sealed, there is no need for the desiccant.
2. Store them in a dark place. Do not expose to sunlight or fluorescent light, keep the temperature between 0°C and 35°C, and keep the relative humidity between 40%RH and 60%RH.
3. The polarizer surface should not come in contact with any other objects. (We advise you to store them in the anti-static electricity container in which they were shipped.

◆ Others

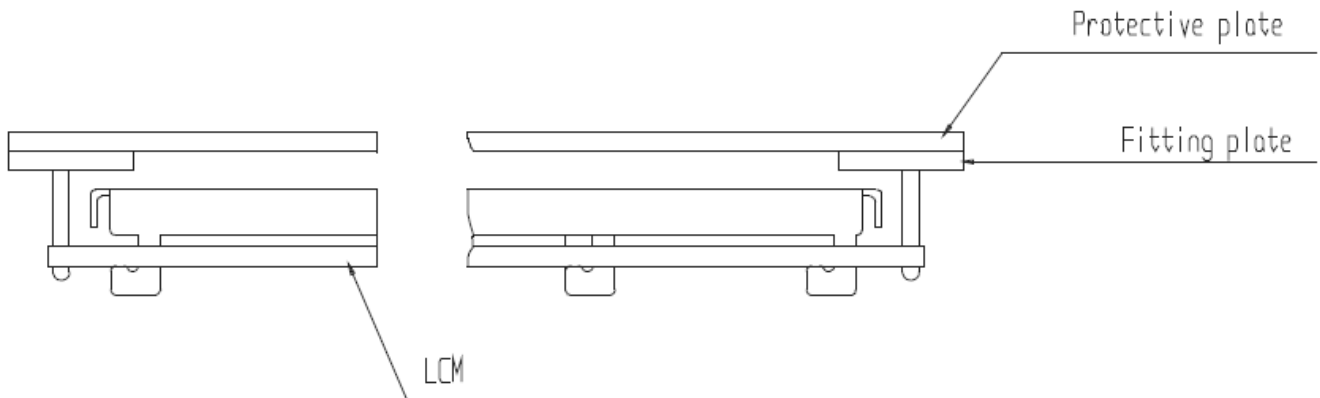
1. Liquid crystals solidify under low temperature (below the storage temperature range) leading to defective orientation or the generation of air bubbles (black or white). Air bubbles may also be generated if the module is subject to a low temperature.
2. If the LCD modules have been operating for a long time showing the same display patterns, the display patterns may remain on the screen as ghost images and a slight contrast irregularity may also appear. A normal operating status can be regained by suspending use for some time. It should be noted that this phenomenon does not adversely affect performance reliability.
3. To minimize the performance degradation of the LCD modules resulting from destruction caused by static electricity etc., exercise care to avoid holding the following sections when handling the modules.
 - Exposed area of the printed circuit board.
 - Terminal electrode sections.

◆ Using LCD Modules

1. Installing LCD Modules

1.1 The hole in the printed circuit board is used to fix LCM as shown in the picture below. Attend to the following items when installing the LCM.

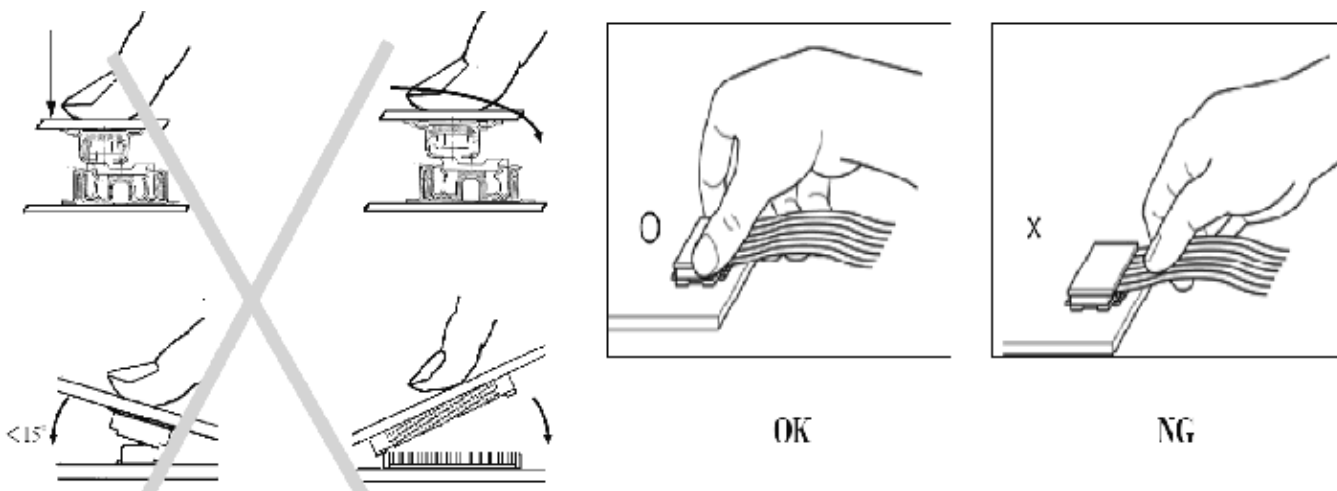
1.1.1 Cover the surface with a transparent protective plate to protect the polarizer and LC cell.



1.1.2 When assembling the LCM into other equipment, the spacer to the bit between the LCM and the fitting plate should have enough height to avoid causing stress to the module surface, refer to the individual specifications for measurements. The measurement tolerance should be $\pm 0.1\text{mm}$.

2. Precaution For Assemble The Module With BTB Connector

Please note the position of the male and female connector position, don't assemble or assemble like the method which the following picture shows.



◆ Precaution For Soldering To The LCM

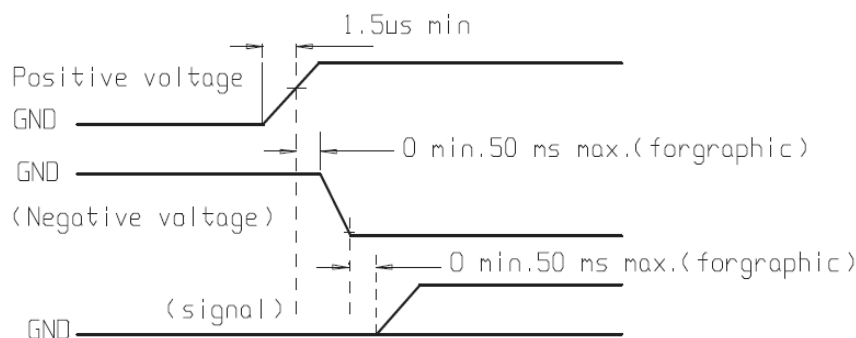
	Hand Soldering	Machine Drag Soldering	Machine Press Soldering
No ROHS Product	290°C ~ 350°C. Time: 3~5S.	330°C ± 350°C. Speed: 4~8mm/s.	300°C ± 330°C. Time: 3~6S. Press: 0.8~1.2Mpa
ROHS Product	340°C ~ 370°C. Time: 3~5S.	350°C ± 370°C. Speed: 4~8mm/s.	330°C ± 360°C. Time: 3~6S. Press: 0.8~1.2Mpa

1. If soldering flux is used, be sure to remove any remaining flux after finishing to soldering operation. (This does not apply in the case of a non-halogen type of flux.) It is recommended that you protect the LCD surface with a cover during soldering to prevent any damage due to flux spatters.
2. When soldering the electroluminescent panel and PC board, the panel and board should not be detached more than three times. This maximum number is determined by the temperature and time conditions mentioned above, though there may be some variance depending on the temperature of the soldering iron.
3. When remove the electroluminescent panel from the PC board, be sure the solder has completely melted, the soldered pad on the PC board could be damaged.

◆ Precaution For Operation

1. Viewing angle varies with the change of liquid crystal driving voltage (VLCD). Adjust VLCD to show the best contrast.
2. It is an indispensable condition to drive LCD's within the specified voltage limit since the higher voltage then the limit cause the shorter LCD life. An electrochemical reaction due to direct current causes LCD's undesirable deterioration, so that the use of direct current drive should be avoided.
3. Response time will be extremely delayed at lower temperature than the operating temperature range and on the mean malfunction or out of order with LCD's. Which will come back in the specified operating temperature.
4. If the display area is pushed hard during operation, the display will become abnormal. However, it will return to normal if it is turned off and then back on.
5. A slight dew depositing on terminals is a cause for electro-chemical reaction resulting in terminal open circuit. Usage under the maximum operating temperature, 50%RH or less is required.
6. Input each signal after the positive/negative voltage becomes stable.

7. Please keep the temperature within specified range for use and storage. Polarization degradation, bubble generation or polarizer peel-off may occur with high temperature and high humidity.



◆ Safety

1. It is recommended to crush damaged or unnecessary LCDs into pieces and wash them off with solvents such as acetone and ethanol, which should later be burned.
2. If any liquid leaks out of a damaged glass cell and comes in contact with the hands, wash off thoroughly with soap and water.

◆ Limited Warranty

Unless agreed between All Shore and customer, All Shore will replace or repair any of its LCD modules which are found to be functionally defective when inspected in accordance with All Shore LCD acceptance standards (copies available upon request) for a period of one year from date of production. Cosmetic/visual defects must be returned to All Shore within 90 days of shipment. Confirmation of such date shall be based on data code on product. The warranty liability is limited to repair and/or replacement on the terms set forth above. All Shore will not be responsible for any subsequent or consequential events.

◆ Return LCM Under Warranty

No warranty can be granted if the precautions stated above have been disregarded. The typical examples of violations are:

- Broken LCD glass.
- PCB eyelet is damaged or modified.
- PCB conductors damaged.
- Circuit modified in any way, including addition of components.
- PCB tampered with by grinding, engraving or painting varnish.
- Soldering to or modifying the bezel in any manner.

Module repairs will be invoiced to the customer upon mutual agreement. Modules must be returned with sufficient description of the failures or defects. Any connectors or cable installed by the customer must be removed completely without damaging the PCB eyelet, conductors and terminals.

■ PRIOR CONSULT MATTER

1. For All Shore standard products, we keep the right to change material, process ... for improving the product property without notice on our customer.
2. For OEM products, if any change needed which may affect the product property, we will consult with our customer in advance.
3. If you have special requirement about reliability condition, please let us know before you start the test on our samples.